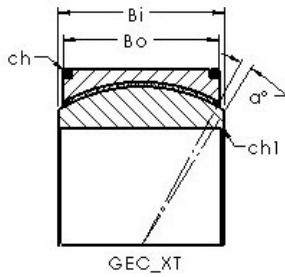
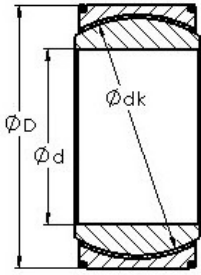




CSC BEARING GROUP limited



AST GEH300XT sliding bearing

Bearing No. GEH300XT

Bore Diameter	300 mm
Outer Diameter	430 mm
Bearing Type - double fractured	extra wide
Bore Dia (d)	300.0000
Outer Dia (D)	430.0000
Outer Width (Bo)	200.0000
Inner Width (Bi)	212.0000
Dynamic Load Rating (Cr)	11,700,000
Static Load Rating (Cor)	28,080,000
Max. shaft corner radius, or 45 deg. chamfer (ch1)	1.100
Max. housing corner radius, or 45 deg. chamfer (ch)	1.100
Spherical Diameter (dk or Dk)	390.000
Mis-alignment Angle (a deg.)	2
Weight (g)	117,000.00
Material	Inner ring and outer ring are made from 52100 chrome steel, or equivalent

GEH300XT Bearing 2D drawings and 3D CAD models