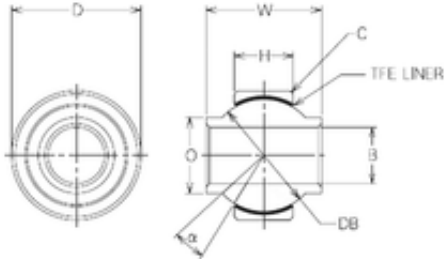




CSC BEARING GROUP limited

12 mm x 26 mm x 12 mm NMB MBYT12 sliding bearing



Bearing No. MBYT12

Size	12x26x22 mm
Bore Diameter	12 mm
Outer Diameter	26 mm
Width	22 mm
d	12 mm
D	26 mm
B	22 mm
C	8,5 mm
Db	22,5 mm
O	16 mm
B	12 mm
C	0,6 mm
D	26 mm
H	8,5 mm
W	22 mm
Angle	22 °
Weight	0,042 Kg
Basic dynamic load rating (C)	32,34 kN
Static load rating radial (C0)	72,03 kN

MBYT12 Bearing 2D drawings and 3D CAD models