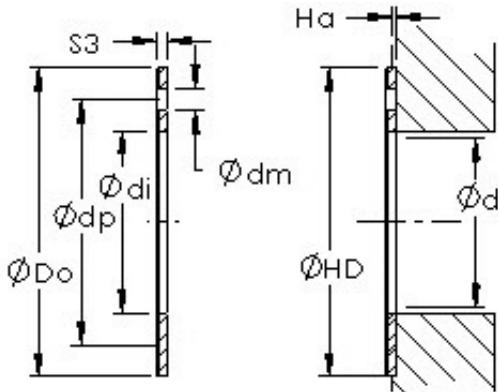




CSC BEARING GROUP limited



AST AST11 WC28 sliding bearing

Bearing No. AST11 WC28

Bore Diameter	26 mm
Outer Diameter	48 mm
Bearing Type	thrust washer
Shaft Dia., Nominal (d)	26.0000
Bearing Outside Diameter, Nominal (Do)	48.000
Washer Inside Diameter, Nominal (di)	28
Washer Inside Diameter Tolerance (di tol.) - +0.25 / -0	+0.25 / 0
Washer Outside Diameter, Nominal (Do)	48
Washer Outside Diameter Tolerance (Do tol.) - +0 / -0.25	+0 / 0.25
Washer Thickness, Nominal (S3)	2
Washer Thickness Tolerance (S3 tol.) - +0 / -0.05	+0 / 0.05
Mounting Hole Dia. (dm)	4.000
Mounting Hole Pitch Dia. (dp)	38
Housing Counterbore Depth (Ha)	1.00
Housing Counterbore Depth Tolerance (Ha tol.) - +0.2 / -0.2	+0.2 / 0.2
Housing Counterbore Diameter, Nominal (HD)	48.000

AST11 WC28 Bearing 2D drawings and 3D CAD models



CSC BEARING GROUP limited

Housing Counterbore Diameter Tolerance (HD tol.)	+0.12 / 0
Material	Bronze shell with PTFE / Fiber lining