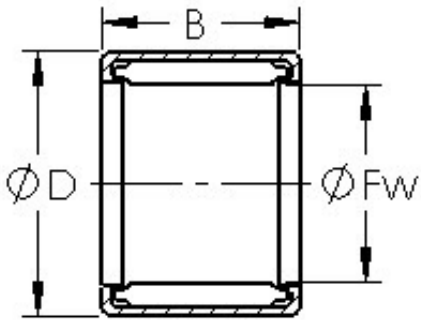




CSC BEARING GROUP limited



AST S1112 Needle bearing

Bearing No. S1112

Bore Diameter	17,4752 mm
Outer Diameter	22,225 mm
Width	19,05 mm
Bearing Type	Full Complement, Mechanically Retained Rollers
Outer Dia (D)	0.8750
Width (B)	0.7500
Dynamic Load Rating (Cr)	3,850
Static Load Rating (Cor)	8,400
Max Speed (Grease) (X1000 RPM)	6,300
Shaft (Fw)	0.688
Weight (g)	17.00
Material - Drawn cup: Hardened carbon steel alloy, Rollers	52100 Chrome steel or equivalent

S1112 Bearing 2D drawings and 3D CAD models