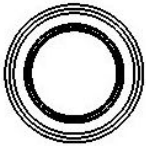
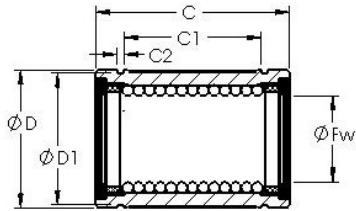




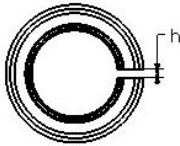
CSC BEARING GROUP limited

AST LBE 50 UU Linear bearing

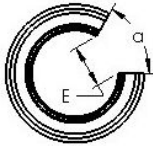
Bearing No. LBE 50 UU



STANDARD



ADJUSTABLE



OPEN

LBE 50 UU Bearing 2D drawings and 3D CAD models

Bore Diameter	50 mm
Bearing Type	sealed, standard type
Dynamic Load Rating (Cr)	3,940
Static Load Rating (Cor)	7,130
Shaft Dia. (Fw)	50.000
Outside Dia. (D)	75.000
Length (C)	100.000
Groove-to-groove length (C1)	72.000
Groove Width (C2)	2.600
Groove Dia. (D1)	71.500
Weight (g)	940.00
Material	52100 chrome steel, or equivalent