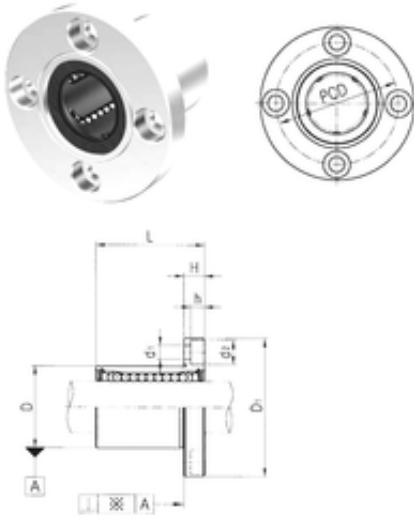




CSC BEARING GROUP limited



LMEF25 Bearing 2D drawings and 3D CAD models

Samick LMEF25 Linear bearing

Bearing No. LMEF25

Bore Diameter	25 mm
Outer Diameter	40 mm
d	25 mm
D	40 mm
d1	5,5 mm
d2	9,5 mm
h	5,4 mm
D1	62 mm
H	8 mm
L	58 mm
PCD	51 mm
Tolerance perpendicularity (C)	15
Weight	0,335 Kg
Basic dynamic load rating (C)	0,98 kN