

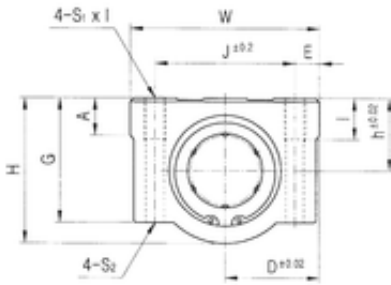


CSC BEARING GROUP limited



Samick SC30WUU Linear bearing

Bearing No. SC30WUU



SC30WUU Bearing 2D drawings and 3D CAD models

Bore Diameter	30 mm
d	30 mm
h	30 mm
A	15 mm
D	39 mm
E	10 mm
G	49 mm
H	59,5 mm
J	58 mm
K	132 mm
L	146 mm
S1x	M8
S2	6,8 mm
W	78 mm
Weight	1,375 Kg
Basic dynamic load rating (C)	2,49 kN