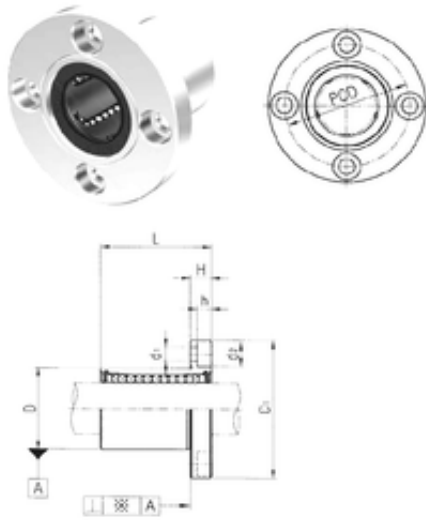




CSC BEARING GROUP limited



Samick LMF10 Linear bearing

Bearing No. LMF10

Bore Diameter	10 mm
Outer Diameter	19 mm
d	10 mm
D	19 mm
d1	4,5 mm
d2	8 mm
h	4,4 mm
D1	40 mm
H	6 mm
L	29 mm
PCD	29 mm
Tolerance perpendicularity (C)	12
Weight	0,078 Kg
Basic dynamic load rating (C)	0,37 kN

LMF10 Bearing 2D drawings and 3D CAD models