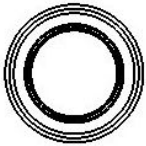
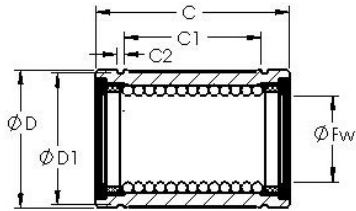




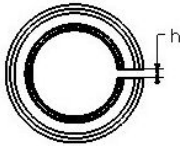
# CSC BEARING GROUP limited

## AST LBE 30 UU AJ Linear bearing

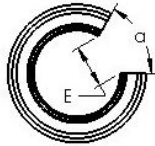
Bearing No. LBE 30 UU AJ



STANDARD



ADJUSTABLE



OPEN

LBE 30 UU AJ Bearing 2D drawings and 3D CAD models

Bore Diameter	30 mm
Bearing Type	sealed, adjustable clearance type
Dynamic Load Rating (Cr)	1,560
Static Load Rating (Cor)	3,060
Shaft Dia. (Fw)	30.000
Outside Dia. (D)	47.000
Length ( C )	68.000
Groove-to-groove length (C1)	48.000
Groove Width (C2)	1.850
Groove Dia. (D1)	44.000
Adjustable Open Gap (h)	2.000
Weight (g)	305.00
Material	52100 chrome steel, or equivalent