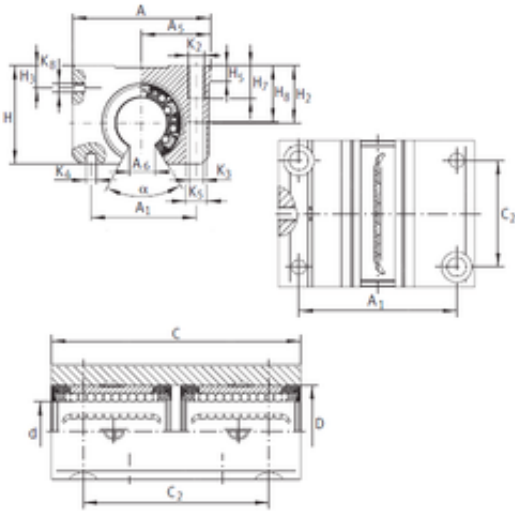




# CSC BEARING GROUP limited

## INA KTNO 30 C-PP-AS Linear bearing

Bearing No. KTNO 30 C-PP-AS



KTNO 30 C-PP-AS Bearing 2D drawings and 3D CAD models

Bore Diameter	30 mm
Outer Diameter	47 mm
d	30 mm
D	47 mm
A6	14 mm
H5	9,5 mm
H7	22 mm
H8	34 mm
K3	8,4 mm
K4	6 mm
K5	15 mm
Thread (K2)	M10
Thread (K8)	M8X1
H3	14 mm
A5	43,5 mm
C3	54 mm
Angle (?)	57 °
A	87 mm
A1	68 mm
C	142 mm
H	60 mm
H2	35 mm
C2	106 mm
Weight	1,23 Kg