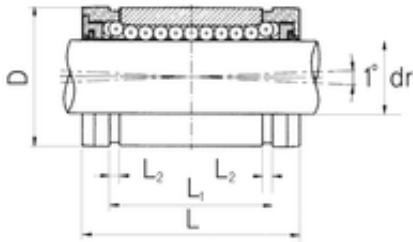




# CSC BEARING GROUP limited



LMES20OP Bearing 2D drawings and 3D CAD models

## Samick LMES20OP Linear bearing

Bearing No. LMES20OP

Bore Diameter	20 mm
Outer Diameter	32 mm
d	20 mm
D	32 mm
h	9 mm
F	3 mm
J	0,9 mm
L ± 0.2	45 mm
L1 ± 0.2	31,3 mm
L2 min.	1,65 mm
	55 mm
Weight	0,051 Kg
Basic dynamic load rating (C)	2,63 kN