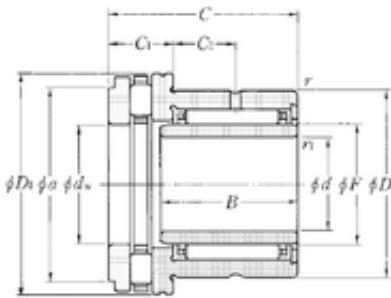




CSC BEARING GROUP limited

25 mm x 42 mm x 20 mm NTN NKXR30T2+IR25 x 30 x 20 Compound bearing

Bearing No. NKXR30T2+IR25 x 30 x 20



NKXR30T2+IR25 x 30 x 20 Bearing 2D drawings and 3D CAD models

| | |
|--------------------------------|------------|
| Bore Diameter | 25 mm |
| Outer Diameter | 47 mm |
| d | 25 mm |
| d1 | 30 mm |
| F | 30 mm |
| D | 42 mm |
| D1 | 47 mm |
| B | 20 mm |
| C | 30 mm |
| ra1 max. | 0,3 mm |
| r min. | 0,6 mm |
| r1 min. | 0,3 mm |
| C1 | 11 mm |
| da min. | 44 mm |
| db min | 27 mm |
| ra max. | 0,6 mm |
| C2 | 9,5 mm |
| Weight | 0,197 Kg |
| Dynamic load rating radial (C) | 22,3 kN |
| Dynamic load rating axial (C) | 27,8 kN |
| Static load rating radial (C0) | 39,5 kN |
| Static load rating axial (C0) | 72,5 kN |
| (Grease) Lubrication Speed | 1500 r/min |